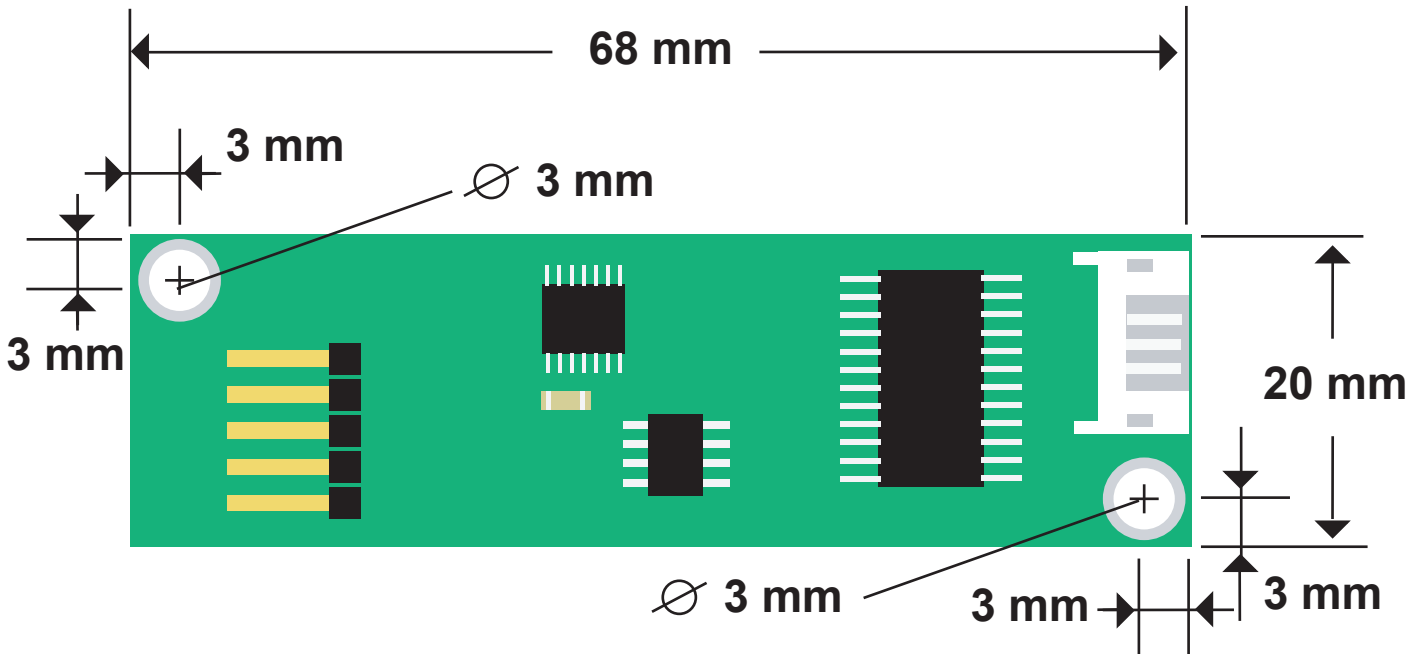


5wire Resistive Controller Hardware Specifications

Power Requirements	+5VDC (max. 100mA, typical 70mA, 50mV peak to peak max ripple)
Operating Temperature	0 to 50 degrees Centigrade
Storage Temperature	-40 to 80 degrees Centigrade
Relative Humidity	95% at 60 degrees Centigrade
Protocol	1. RS232: 9600 bauds, None parity, 8 data bits, 1 stop bit 2. USB: USB 1.1 Low speed 3. PS2: PS2 mouse
Resolution	2048 x 2048
Accuracy Tolerance	Max. +/- 0.5% tolerance
Report Rate	1. RS232: Max. 160 points/sec 2. USB: Max. 160 points/sec 3. PS2: Max. 140 points/sec
Response Time	Max. 35 ms
Regulatory Approvals	FCC-B, CE
Pin Out Definition	UL, UR, COM, LR, LL/UL. UR, COM, LL, LR
Panel Resistance	50 ~ 200 ohm (pin to pin on the same layer, touch under 1.2k ohm)

Resistive Controller Diagrams

5-Wire USB



5-Wire RS232/ PS2

